



**Boston E Lab**  
Energy Environment Essencial



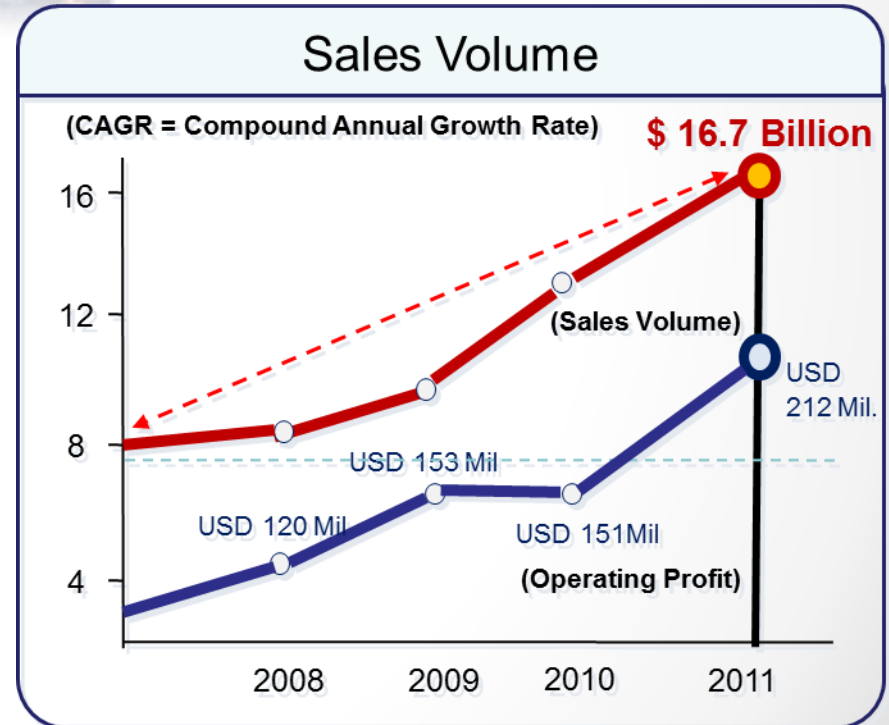
## CORE LED Products



# Partner Company Profile



- ❖ **Establishment: 1967**
- ❖ **Sales Volume (2010): USD 13 Billion**
- ❖ **Vision: World Top Class Trader, Investor, Developer**
- ❖ **Major Business Sectors:**
  - *International Trade*
  - *Project Organizing*
  - *Resource Development*
  - *Manufacturing Investment*
- ❖ **Employees: 2,983** (excluding employees in manufacturing)
- ❖ **Global Network: 96 Branches in 62 countries**



# Role of Boston E Lab, Inc Total Solution Provider



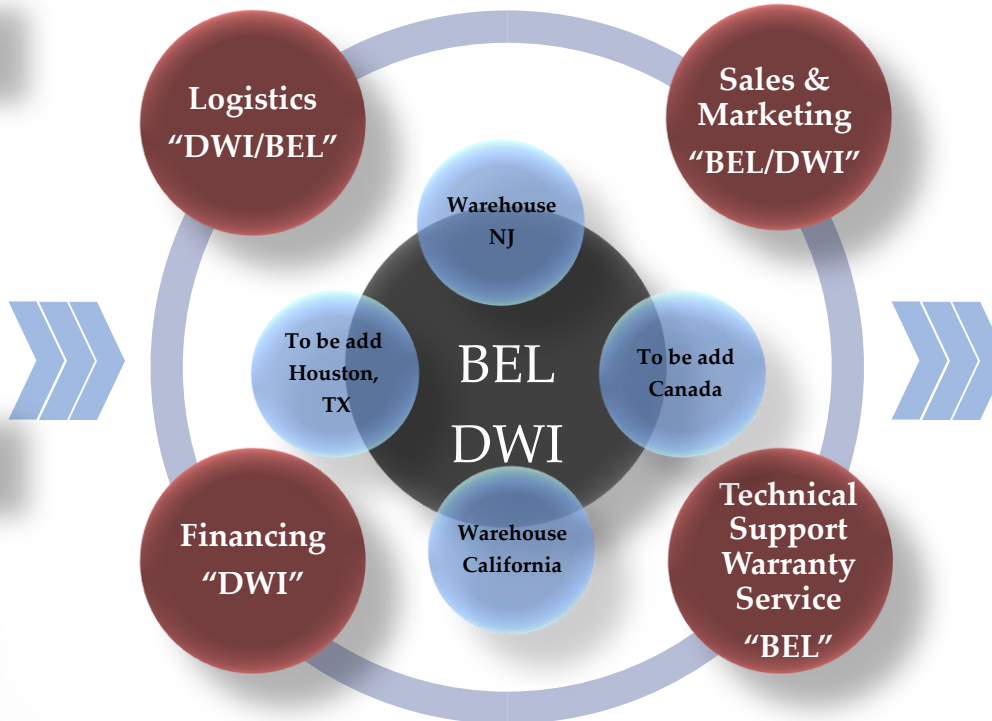
**Boston E Lab**  
Energy Environment Essential

## Manufacturer

**Fine  
Technix**

## Partner Company

**DAEWOO  
INTERNATIONAL**



## Key Customers

ESCOs

Contractors

Property  
Management  
Companies

Schools and  
Universities

Corporations

National &  
Regional  
Retailers

Municipal  
Government

Commercial &  
Industrial  
Lighting

# Why Consider BEL's LED Products?



**Boston E Lab**  
Energy Environment Essencial

## [BEL and DWI]

- DWI established in 1967 and year 2011 revenue is \$16.7B USD. DWI is BEL's Financing and logistics partner Company.
- Boston E Lab, Inc. ("BEL") is DLC qualified 2x2 and XL products dual listing Company. BEL selected products "Technical Support and Warranty Services".

## [LED Benefits]

Low Energy Use , Long-lasting & Durable , Less Heat Generation reduces HVAC running cost, Environmentally Friendly (no gas, no mercury, no cadmium), No UV (good for human and animal) and Cost-Effective with our utility rebate qualified product. **IT'S TRULLY GREEN PRODUCT !!!**

## [ROI Consideration]

2x2 and XL is utility rebate qualified product. Utility rebate improve ROI. Long life led (>50,000hr) reduces maintenance cost reduction (parts and labor). Also reduces business distraction. Eliminate hazardous material disposal cost. May qualify State and Federal Energy efficiency tax credit



## Comparing LED, Metal Halide, and CFLlights

	LED	Metal Halide	CFL
Lifespan	50,000 Hours	5,000 Hours	10,000 Hours
Watts per Bulb	280 W	1080 W	N/A
KWh used over 50,000 hours	14,000 KW	54,000 KW	N/A
Bulbs needed for 50,000 Hour Use	1	10	N/A

# LED Product Types



**Boston E Lab**  
Energy Environment Essential

- XL060 Products (DLC qualified)
  - XL060-(60w, single, bracket/no bracket)
  - XL060-(120w, double, with b/ no b)
  - XL060 Pole, Canopy Mount (60W, 120watt)
- XL140 Products (DLC qualified)
  - XL140-(140w, single, bracket/no bracket)
  - XL140-(280w, double, with b/no b)
  - XL140-(420w, triple, with b/ no b)
  - We offer pole mount option to all XL140
- 2'x2' Flat Panel Products (DLC qualified)
  - FS50VT8 (Recess and mounting type)
- Street light: 72w,120w,150watt
- A-Corn Type: 50w,70w,100watt
- Snap-On type(Laser Dot technology) LED sign
  - Indoor & Outdoor include 3D sign



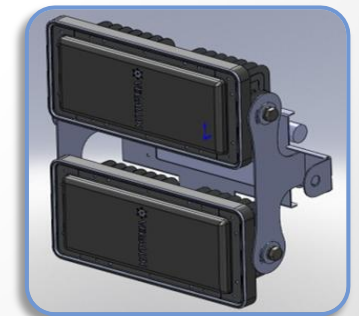


# XL060UA Product Family



**Boston E Lab**  
Energy Environment Essential

Model	Description	Usage References
<b>XL060U-SB (60watt) 5200lm</b>	<ul style="list-style-type: none"> <li>• 60W Single Flood Light</li> <li>• Adjustable to 4 different directions</li> <li>• Beams are adjustable to 5 different angles</li> <li>• Weight : 4 kg</li> <li>• Dimensions : 326 x 192 x 178 mm</li> </ul>	<ul style="list-style-type: none"> <li>• Canopies</li> <li>• Billboards</li> <li>• Wall Mounts</li> <li>• Factories</li> <li>• Warehouses</li> </ul>
<b>XL060U-DB (120watt) 10400lm</b>	<ul style="list-style-type: none"> <li>• Double Stacker 60W Flood Light</li> <li>• Adjustable to 4 directions</li> <li>• 5 different beam angles</li> </ul>	<ul style="list-style-type: none"> <li>• Bill Boards</li> <li>• Wall Mounts</li> <li>• Factories</li> <li>• Warehouses</li> <li>• Wall Washers</li> </ul>
<b>XL060U-DN Shoebox (120watt) 10400lm</b>	<ul style="list-style-type: none"> <li>• Double Stacker 60W Flood Light</li> <li>• Adjustable to 2 directions</li> <li>• 5 different beam angles</li> <li>• Specialized for Shoe-Box</li> </ul>	<ul style="list-style-type: none"> <li>• Replacement for 200W - 400W Conventional 16" Shoe-Box</li> </ul>





**Boston E Lab**  
Energy Environment Essencial

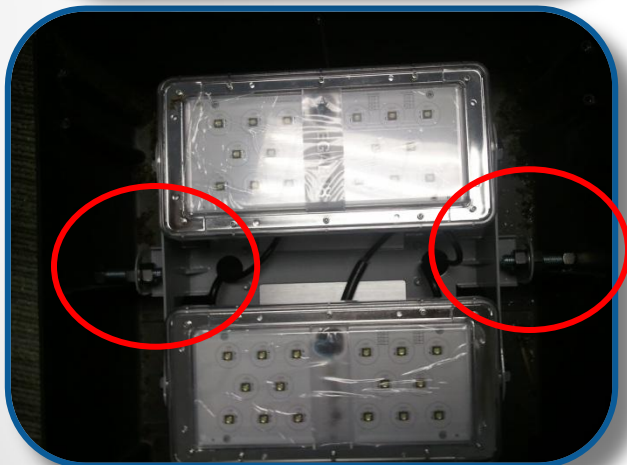
**XL060UA Products**  
**Single(60w), Double(120W)**



**XL060UA-DN (120W):  
400w (475watt) Shoebox Retrofit**



**Boston E Lab**  
Energy Environment Essencial

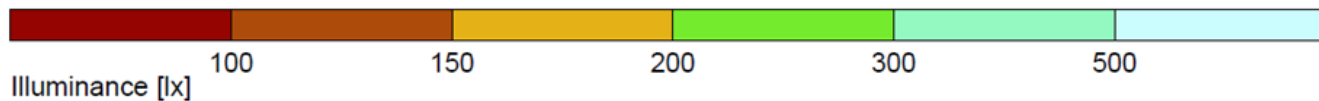
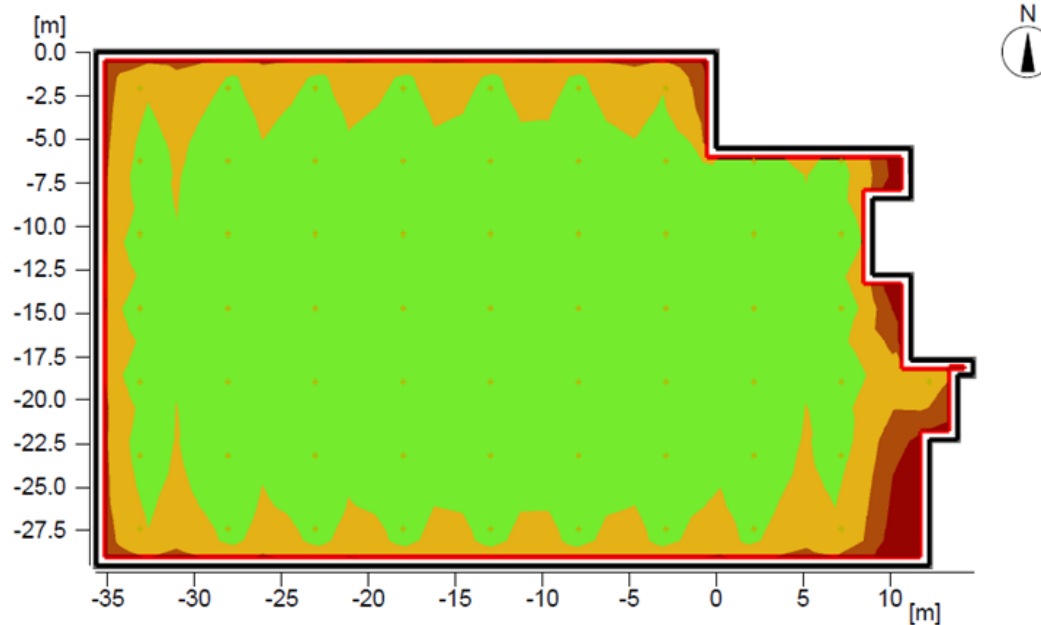




# XL060UA Lighting Simulation



**Boston E Lab**  
Energy Environment Essencial



## General

Calculation algorithm used	Average indirect fraction
Height of evaluation surface	0.75 m
Height of luminaire plane	4.00 m
Maintenance factor	0.90
Total luminous flux of all lamps	297600 lm
Total power	3720 W
Total power per area (1330.27 m <sup>2</sup> )	2.80 W/m <sup>2</sup> (1.32 W/m <sup>2</sup> /100lx)

**XL060UA-SB/DB Lighting Energy Savings (Energy saving only )**  
**The calculation below does not include; utility rebate, maintenance cost saving, hazardous material disposal cost saving and may qualify your energy tax credit.**



**Boston E Lab**  
 Energy Environment Essencial

Description	Existing Lamp	LED Lamp
Metal Halide(watt)	225	60
Transformer(watt)	25	0
Total watt/lamp(watt)	250	60
Energy Saving%	76%	
Operating Hr/day	12	12
Days of use/week	5	5
Weeks of use/year	52	52
Total watt use/year	780000	187200
Total KW use/year	780	187
Cost/KW	\$0.15	\$0.15
Total cost/lamp/year	\$117.00	\$28.08
# of Lamp	100	100
Total Elec \$/year	\$11,700.00	\$2,808.00
Elec save \$/year		\$8,892.00
Life Time (hour)		50000
Expected life(years)		16.03
<b>Life Time Saving</b>		<b>\$142,500</b>

Description	Existing Lamp	LED Lamp
Metal Halide(watt)	400	120
Transformer(watt)	60	0
Total watt/lamp(watt)	460	120
Energy Saving%	73.91%	
Operating Hr/day	12	12
Days of use/week	5	5
Weeks of use/year	52	52
Total watt use/year	1435200	374400
Total KW use/year	1435.2	374
Cost/KW	\$0.15	\$0.15
Total cost/lamp/year	\$215.28	\$56.16
# of Lamp	100	100
Total Elec \$/year	\$21,528.00	\$5,616.00
Elec save \$/year		\$15,912.00
Life Time (hour)		50000
Expected life(years)		16.03
<b>Life Time Saving</b>		<b>\$255,000</b>



**\*Note that these numbers only include savings from energy costs, excluding maintenance costs, replacement costs, rebate savings, etc.**



# XL060UA-SB Specifications



**Boston E Lab**  
Energy Environment Essencial

## FEATURES

*Green Energy Products & Solutions*

Body: Steel

Light Distribute Cover: Diffuser Lens

Frame Design: 1pc

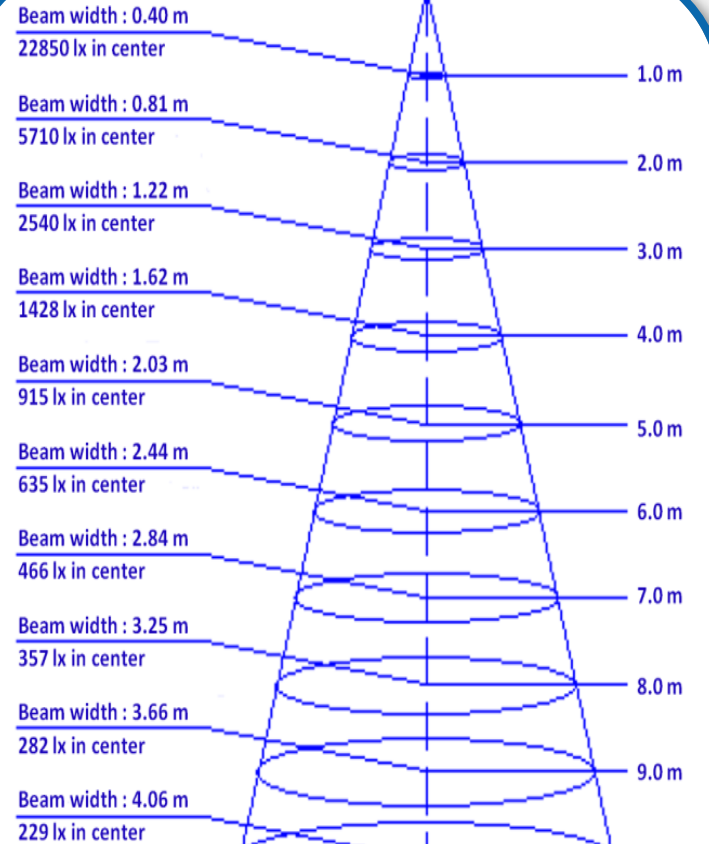
**VEGALUX**



## SPECIFICATION

Made in Korea

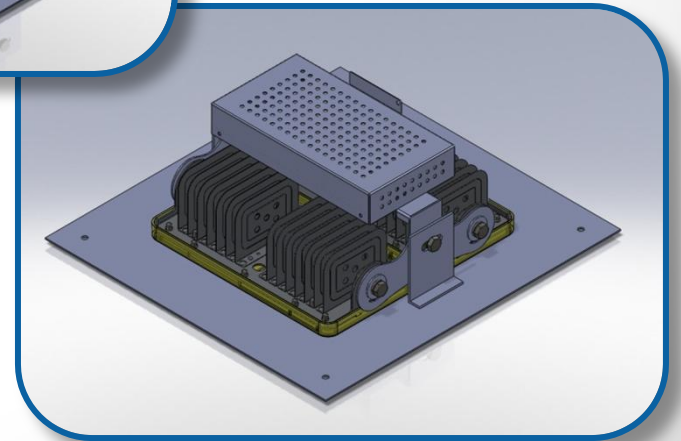
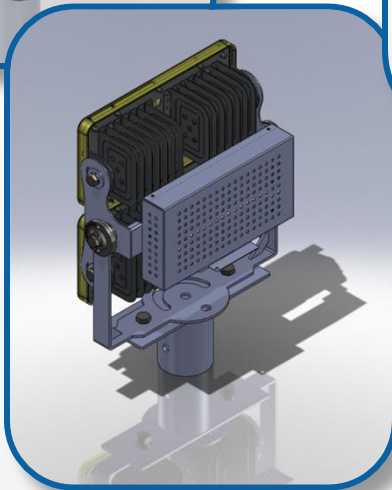
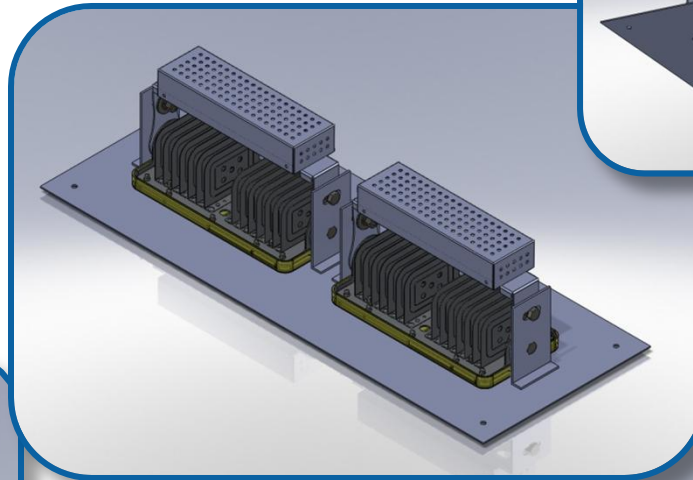
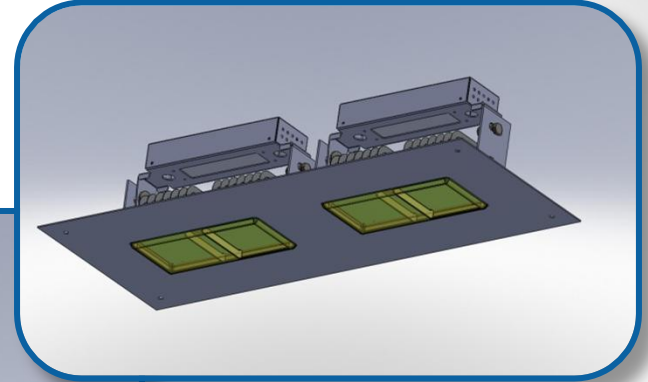
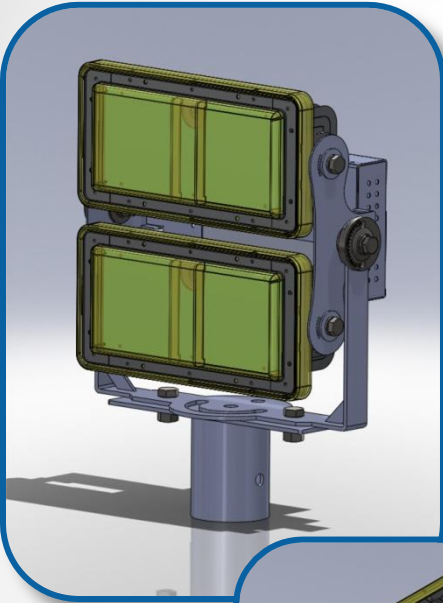
Description	60W Flood light (PW)	
Model Number	XL060U2-P2RC1	
Installation Type	Bracket installation	
Size (mm)/with SMPS	326x192± 3mm , 178± 3mm	
Watt	60W	
Input Current(mAac)	287@220V	600@100V
Fixture Watt	60W ± 10%	
Lumen	4,500lm	
Lumen/watt	80lm/w	
Beam Angle	20°	
Lux @ 10ft	2,456 lx in center	
Lux @ 30ft	274 lx in center	
Lux @ 50ft	98 lx in center	
CRI	80 Ra (Typ.)	
CCT (K)	5,000K ~ 6,000K	
Input Voltage (Hz)	AC 90 ~ 304(V), 50/60(Hz)	
SMPS Power	UL, CE	
Power Factor	>0.95	
IP Grade	Indoor/Outdoor Use (IP=66)	
Weight	4.3Kg/9.48Lbs	
Operating Temp	-30 ~ 50 (°C)	
Certification	Design Lighting Consortium Pending, ETL	
Other Cert's	IES, LM79,LM80, In-Situ	
Expected Life	>50,000 hour	
Limited Warranty	5 Year UNRC	



# XL060UA-SB/DB Pole Mounts and Canopies



**Boston E Lab**  
Energy Environment Essential



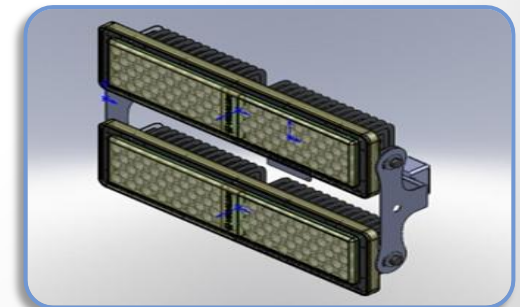
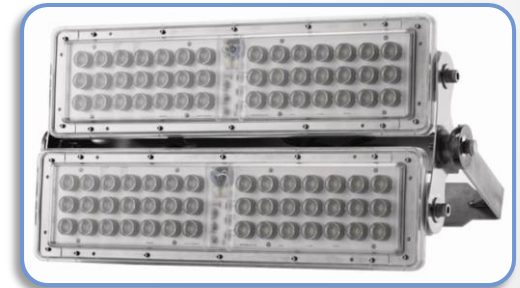


# XL140UA Product Family



**Boston E Lab**  
Energy Environment Essencial

Model	Description	Usage References
<b>XL140UA-SB (140watt) 11,700lm</b>	<ul style="list-style-type: none"> <li>• 140W Single Flood Light</li> <li>• Adjustable to 4 different directions</li> <li>• Beams are adjustable to 5 different angles</li> <li>• Weight : 5.8 kg</li> <li>• Dimensions : 593 x 196 x 190 mm</li> </ul>	<ul style="list-style-type: none"> <li>• Canopies</li> <li>• Wall Mounts</li> <li>• Factories</li> <li>• Warehouses</li> <li>• Wall Washers</li> </ul>
<b>XL140UA-DB (280watt) 23,400lm</b>	<ul style="list-style-type: none"> <li>• Double Stacker 140W Flood Light</li> <li>• Adjustable to 4 directions</li> <li>• 5 different beam angles</li> </ul>	<ul style="list-style-type: none"> <li>• Wall Mounts</li> <li>• Factories</li> <li>• Warehouses</li> <li>• Wall Washers</li> </ul>
<b>XL140UA-DN Shoobox (280watt) 23,400lm</b>	<ul style="list-style-type: none"> <li>• Double Stacker 140W Flood Light</li> <li>• Adjustable to 2 directions</li> <li>• 5 different Beam Angle</li> <li>• Specialized for Shoe-Box</li> </ul>	<ul style="list-style-type: none"> <li>• Replacement for 500W - 1,000W Conventional 22'' Shoe-Box</li> </ul>



# XL140UA Products

Single(140W) Double(280W), Triple(420W)



**XL140UA-D(2800W): 1000w (1080w), Shoebox Retrofit**  
**XL060UA-D(120W): 400w (475w), Shoebox Retrofit**



**Boston E Lab**  
Energy Environment Essencial



**XL140UA-SB/DB Lighting Energy Savings (Energy saving only )**  
**The calculation below does not include; utility rebate, maintenance cost saving, hazardous material disposal cost saving and may qualify your energy tax credit.**



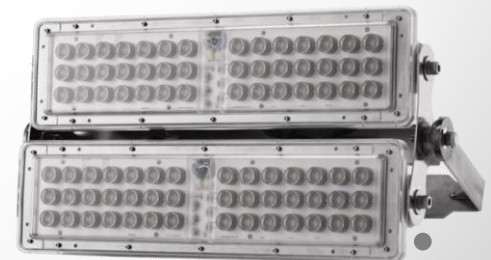
**Boston E Lab**  
 Energy Environment Essential

Description	Existing Lamp	LED Lamp
Metal Halide(watt)	500	140
Transformer(watt)	50	0
Total watt/lamp(watt)	550	140
Energy Saving%	74.55%	
Operating Hr/day	12	12
Days of use/week	5	5
Weeks of use/year	52	52
Total watt use/year	1716000	436800
Total KW use/year	1716	437
Cost/KW	\$0.15	\$0.15
Total cost/lamp/year	\$257.40	\$65.52
# of Lamp	100	100
Total Elec \$/year	\$25,740.00	\$6,552.00
Elec save \$/year		\$19,188.00
Life Time (hour)		50000
Expected life(years)		16.03
<b>Life Time Saving</b>		<b>\$307,500</b>

Description	Existing Lamp	LED Lamp
Metal Halide(watt)	1000	280
Transformer(watt)	100	0
Total watt/lamp(watt)	1100	280
Energy Saving%	74.55%	
Operating Hr/day	12	12
Days of use/week	5	5
Weeks of use/year	52	52
Total watt use/year	3432000	873600
Total KW use/year	3432	874
Cost/KW	\$0.15	\$0.15
Total cost/lamp/year	\$514.80	\$131.04
# of Lamp	100	100
Total Elec \$/year	\$51,480.00	\$13,104.00
Elec save \$/year		\$38,376.00
Life Time (hour)		50000
Expected life(years)		16.03
<b>Life Time Saving</b>		<b>\$615,000</b>



**\*Note that these numbers only include savings from energy costs, excluding maintenance costs, replacement costs, rebate savings, etc.**





# XL140UA-SB Specifications



**Boston E Lab**  
Energy Environment Essential

## FEATURES

*Green Energy Products & Solutions*

Housing: Aluminium

Lense: Prism Lens

WaterProof Casing

XP-G chip adjusted

## PRODUCT PHOTO

**VEGALUX**

Made in Korea

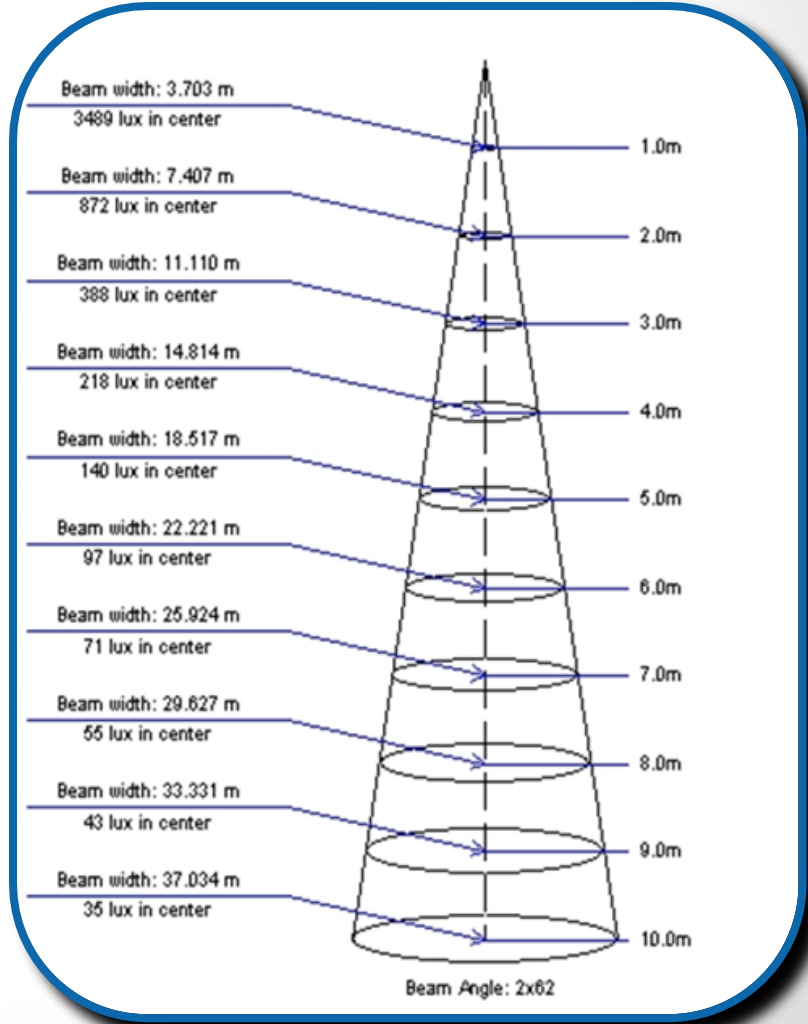


## SPECIFICATION

Model #/Description	XL140UA/Pure
Power Consumption	140
Luminous Flux(Lumen)	11,200
Luminaire (Lm/W)	80
Luminance(Lux/1m)	3,489
Luminance(Lux/26ft)	55
CRI	80
Beam Angle (Degree)	120
Base	Bracket Install
Size (mm)	593(L)x196(W)x190(H)
Size (in)	237.2(L)x78.4(W)x76(H)
Color Temperature (K)	6,500
Voltage	AC90~290
Power Factor	0.9
Electrical Efficiency(%)	90
Weight (Kg/Lbs)	5.8k/11.6Lbs
Dimming	NO
IP Grade	IP67
Operating Temperature(°C)	Celsius: -30 ~ 40
Lifetime (hours)	30,000~50,000
Replacement	MHL 300W

## Warranty

5 Year UNRC

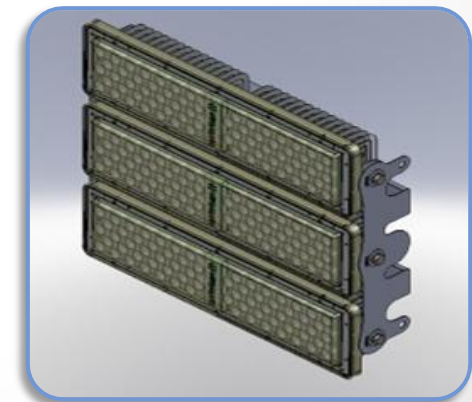


# XL140UA-TB Products



**Boston E Lab**  
Energy Environment Essencial

Model	Description	Usage Reference
<b>XL140UA-TB</b> <b>(420watt)</b> <b>35,100lm</b>	<ul style="list-style-type: none"> <li>• Triple Stacker 140W Flood Light</li> <li>• Adjustable to 4 directions</li> <li>• 5 different beam angles</li> </ul>	<ul style="list-style-type: none"> <li>• Wall Washers</li> <li>• Ball Fields</li> <li>• Racing Tracks</li> <li>• Harbors</li> <li>• Ports</li> </ul>
<b>XL140UA-TN</b> <b>Hanger</b> <b>(420watt)</b> <b>35,100lm</b>	<ul style="list-style-type: none"> <li>• Triple Stacker 140W Flood Light</li> <li>• Adjustable to 2 directions</li> <li>• 5 different Beam Angle</li> </ul>	<ul style="list-style-type: none"> <li>• High Ceiling Factories</li> <li>• Hangars</li> <li>• Mounting with Wires</li> </ul>



# XL140UA-TB Products



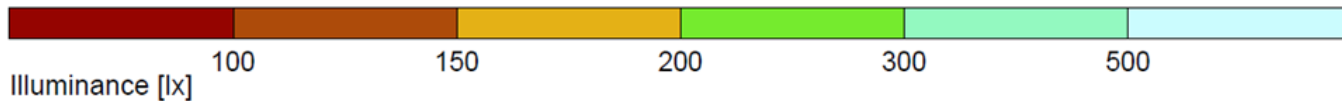
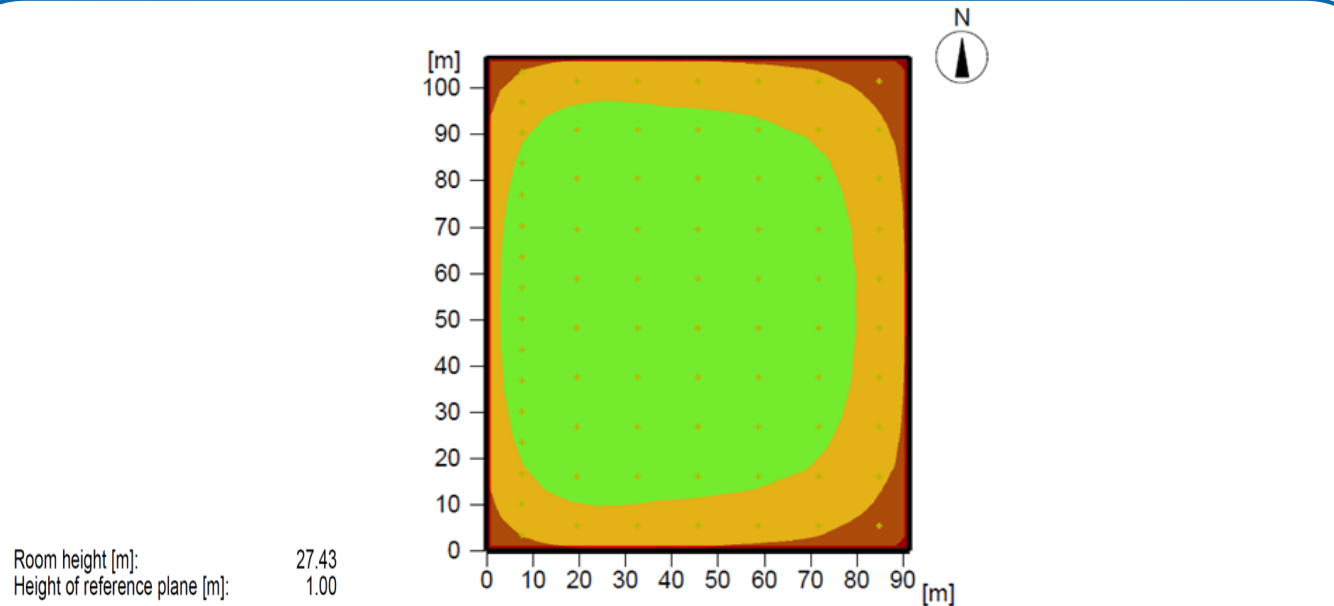
**Boston E Lab**  
Energy Environment Essencial



# XL140UA-TN Airplane Hanger Lighting Simulation



**Boston E Lab**  
Energy Environment Essencial



## General

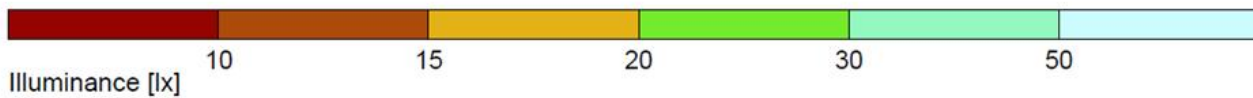
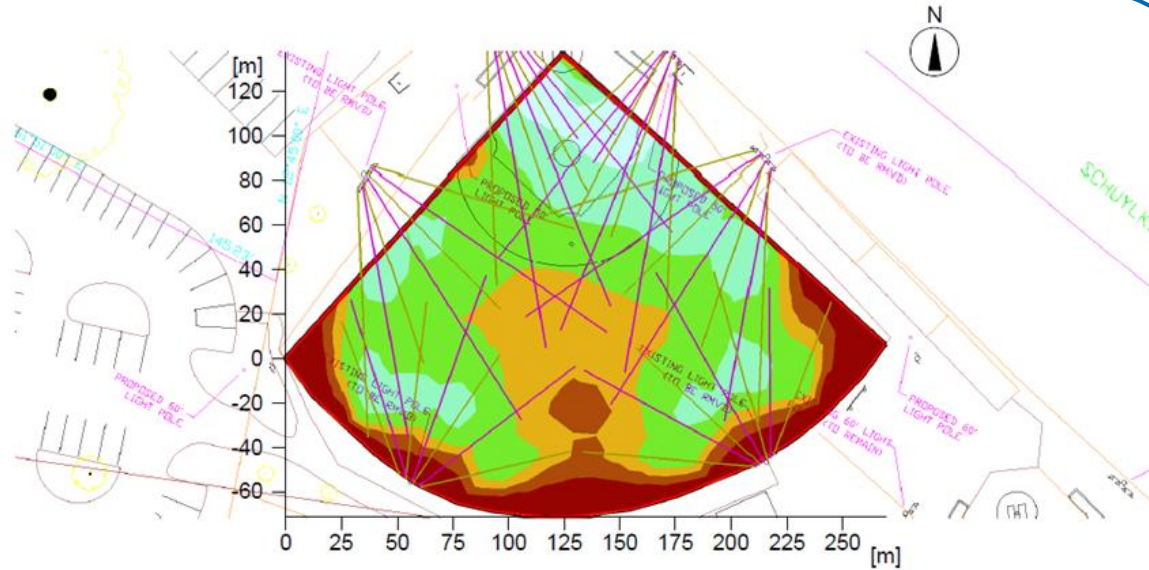
Calculation algorithm used	Average indirect fraction
Height of evaluation surface	1.00 m
Maintenance factor	0.97
Total luminous flux of all lamps	2553600 lm
Total power	31920 W
Total power per area (9754.82 m <sup>2</sup> )	3.27 W/m <sup>2</sup> (1.58 W/m <sup>2</sup> /100lx)



# XL140UA-TB Little League Field Lighting Simulation



**Boston E Lab**  
Energy Environment Essential



## General

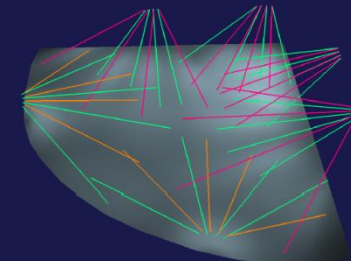
Calculation algorithm used  
Height of evaluation surface  
Maintenance factor

Average indirect fraction  
0.75 m  
1.00

Total luminous flux of all lamps  
Total power  
Total power per area (32062.64 m<sup>2</sup>)

1386000 lm  
18925 W  
0.59 W/m<sup>2</sup> (2.43 W/m<sup>2</sup>/100lx)

## 3D Simulation



**XL140UA-SB/DB Lighting Energy Savings (Energy saving only )**  
**The calculation below does not include; utility rebate, maintenance cost saving, hazardous material disposal cost saving and may qualify your energy tax credit.**



**Boston E Lab**  
 Energy Environment Essencial

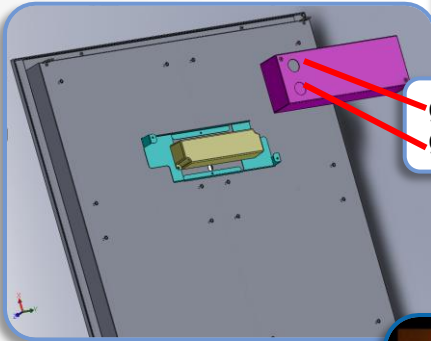
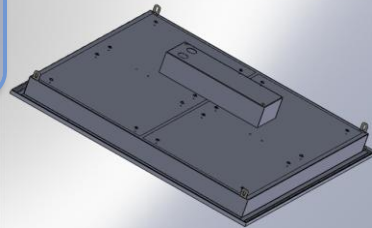
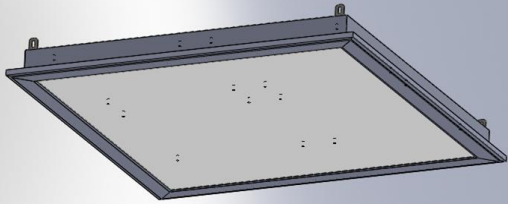
Description	Existing Lamp	LED Lamp
Metal Halide(watt)	1500	420
Transformer(watt)	150	0
Total watt/lamp(watt)	1650	420
Energy Saving%	74.55%	
Operating Hr/day	12	12
Days of use/week	5	5
Weeks of use/year	52	52
Total watt use/year	5148000	1310400
Total KW use/year	5148	1310
Cost/KW	\$0.15	\$0.15
Total cost/lamp/year	\$772.20	\$196.56
# of Lamp	100	100
Total Elec \$/year	\$77,220.00	\$19,656.00
Elec save \$/year		\$57,564.00
Life Time (hour)		50000
Expected life(years)		16.03
<b>Life Time Saving</b>		<b>\$922,500</b>

**\*Note that these numbers only include savings for energy costs, excluding maintenance costs, replacement costs, rebate savings, etc.**



# 50W 2'x2' LED Flat Panel

## FS50VT8



Ø22 mm Knockout open hole (AC)  
Ø22 mm closed hole(Dimming)



### LED LAMP : 50W LED Flat Panel



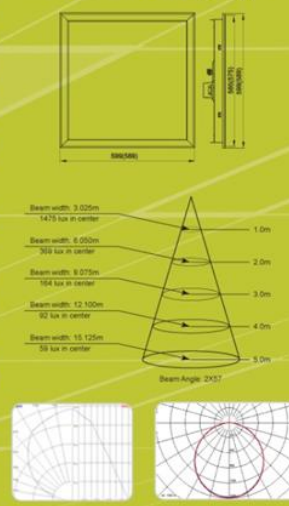
Body: SPCC      Frame Design: 1 pc  
Light Distribute Cover: Polycarbonate  
Application: Office, Conference Room, Lobby, Hallway, Store, ---etc

### [2x2 FLAT PANEL: PRODUCT HIGHLIGHTS]

- 4260 Lumina output while using only 50watts energy
- 164 lux in center when installing on 3meters (9.72ft) height ceiling
- Seamless one piece aluminum frame design
- Universal Voltage: AC 90 ~ 304(V), 50/60(Hz)
- Dimming: 1~10Vdc, PWM, Resistance
- High CRI: 82 Ra (Typ.)
- Solution to replace 3 bulbs T-8 fixture (2x4)
- World-class heat dissipation technology
- Environmentally friendly product

### SPECIFICATION

Description	2"x2" Flat Panel(PW)	[INSTALLATION TYPE]
Model Number	FS50VT8-P3C01	T-Bar: Recess type M-bar: Mounting type
Installation Type	Recess(T), Mount(M)	
Size(mm)/with SMPS	599x599x49/98mm	
Watt	50W	
Fixture Watt	50W ± 10%	
Lumen	4,260lm	
Lumen/Watt	80lm/w	
Beam Angle	120°	
Lux @ 1m	1,475 lx in center	
Lux @ 3m	164 lx in center	
CRI	82 Ra (Typ.)	
CCT(K)	5,000K ± 200	
Input Voltage (Hz)	AC 90 ~ 304(V), 50/60(Hz)	
Dimming	1~10Vdc, PWM, Resistance	
SMPS Power	Class 2, UL, CE	
Power Factor	> 0.95	
IP Grade	Indoor Use	
Weight	6.0kg/13.23lbs	
Operating Temp	-20 ~ 50(°C)	
Certification	Pending: Design Lighting Consortium	
Other Cert's	IES, LM79, LM80, In-Situ	
Expected Life	> 50,000 hours	
Limited Warranty	5 Year UNRC	



# Flat Panel Key Highlights

FS50VT8



- 1. **DLC approved (Utility Rebate qualified Product)**

- 2. **4170lm**

**Approximately 1000lumen higher than competitor products**

- 3. **May replace 4 tube T-8 (2' x 4' fixture)**

- 4. **1PC aluminum frame: No frame assembly needed**

- 5. **Operate with AC100~277V**

- 6. **Dimmable: Down to 10% (smooth linear dimming)**

- 7. **Can connect up to 20 panels onto 1 wall dimmer**

- 8. **Type: Ceiling recess type and direct mounting type**

- 9. **Limited Warranty: Replacement Parts**

**5 Year UNRC (Under Normal Running Conditions)**

- 10. **Technical support and Warranty Services**

**Boston E Lab, Inc located in Massachusetts.**

**781.369.1556, 781.775.0081    [paul@bostonelabinc.com](mailto:paul@bostonelabinc.com)**



## Flat Panel Description



- **Models** : FS50VT8-P3C01, FS50VT8-W2C01
- **Construction** : A high performance LED flat panel designed for installation in drop ceilings(T-bar); typically used to replace standard 2'x2' fluorescent fixtures. The profile is slim, only 1.6inches deep including the junction box, making it ideal for low depth ceiling cavities.
- **On/Off** : Panels can operate independently, or can be daisy chained together to work with standard on/off wall switches.
- **Dimming** : Panels are fully dimmable with a Finetechnix 0-10V wall dimmer.
- **Linking** : Up to 20 panels can be linked together.

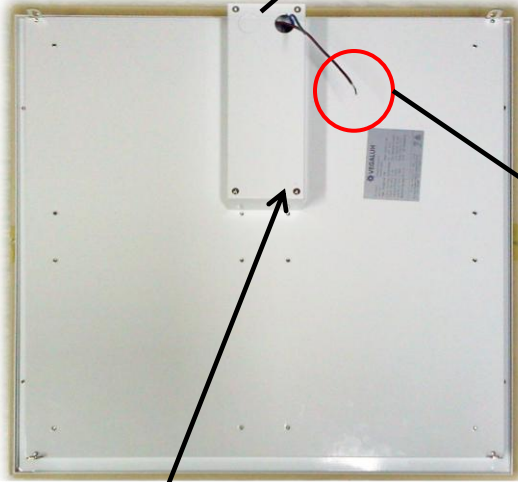


# Flat Panel Features



**Boston E Lab**  
Energy Environment Essencial

- Back Panel



**Power Supply**

**0-10 Output** →  
**Dim(+)** - Blue  
**Dim(-)** - White

**AC input**  
**BLUE** - Neutral  
**BROWN** - Live

- 0-10 Wall Dimmer



**AC in** - Blue  
**0-10V Output**  
**Dim(+)** - Red  
**Dim(-)** - Black

**Dimming Dial**

**Power On/Off**

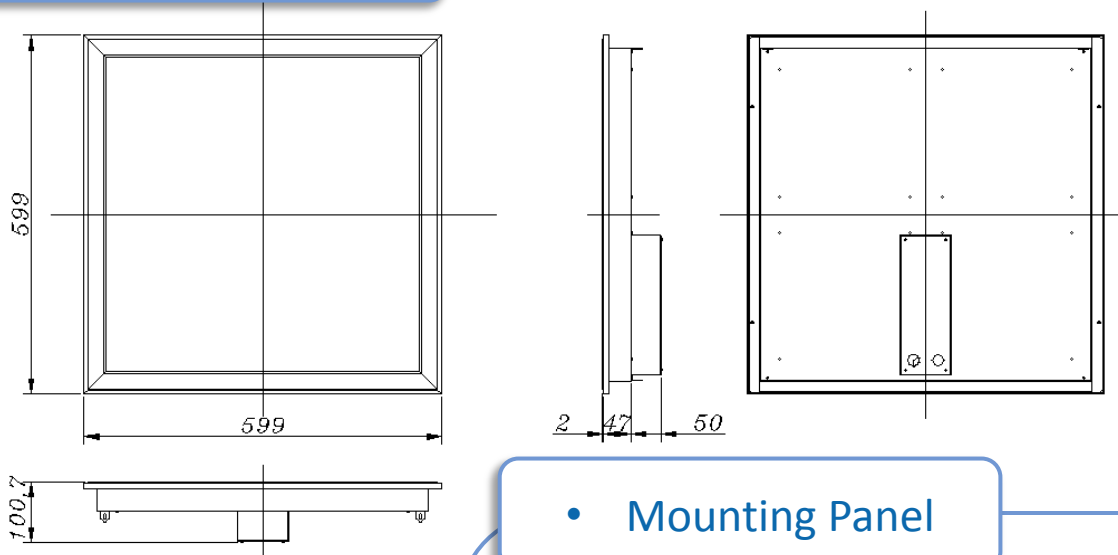
**VEGALUX**  
Finetechnix

# Flat Panel Ceiling Mounting

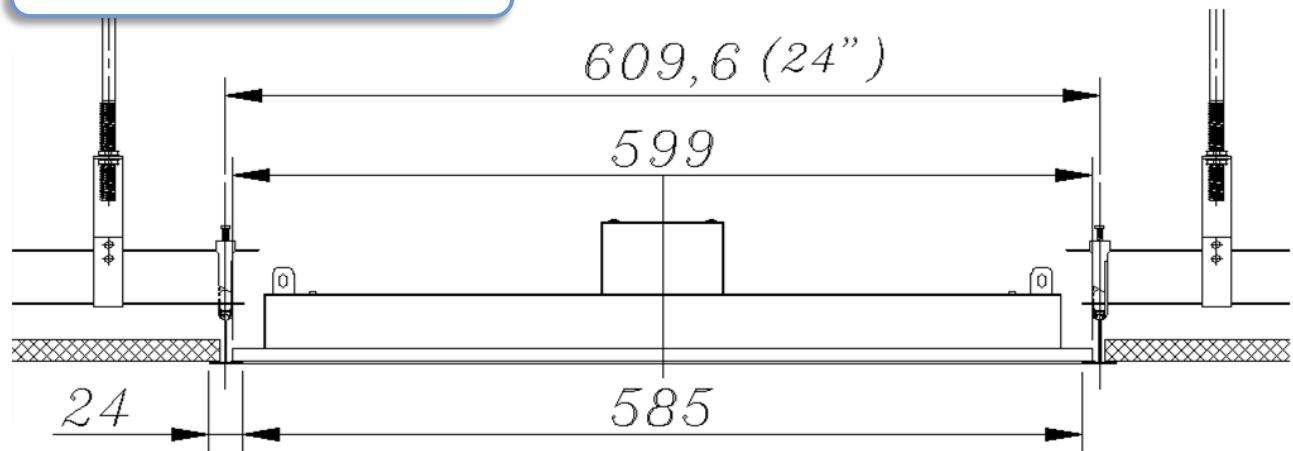


**Boston E Lab**  
Energy Environment Essencial

- Dimensions



- Mounting Panel

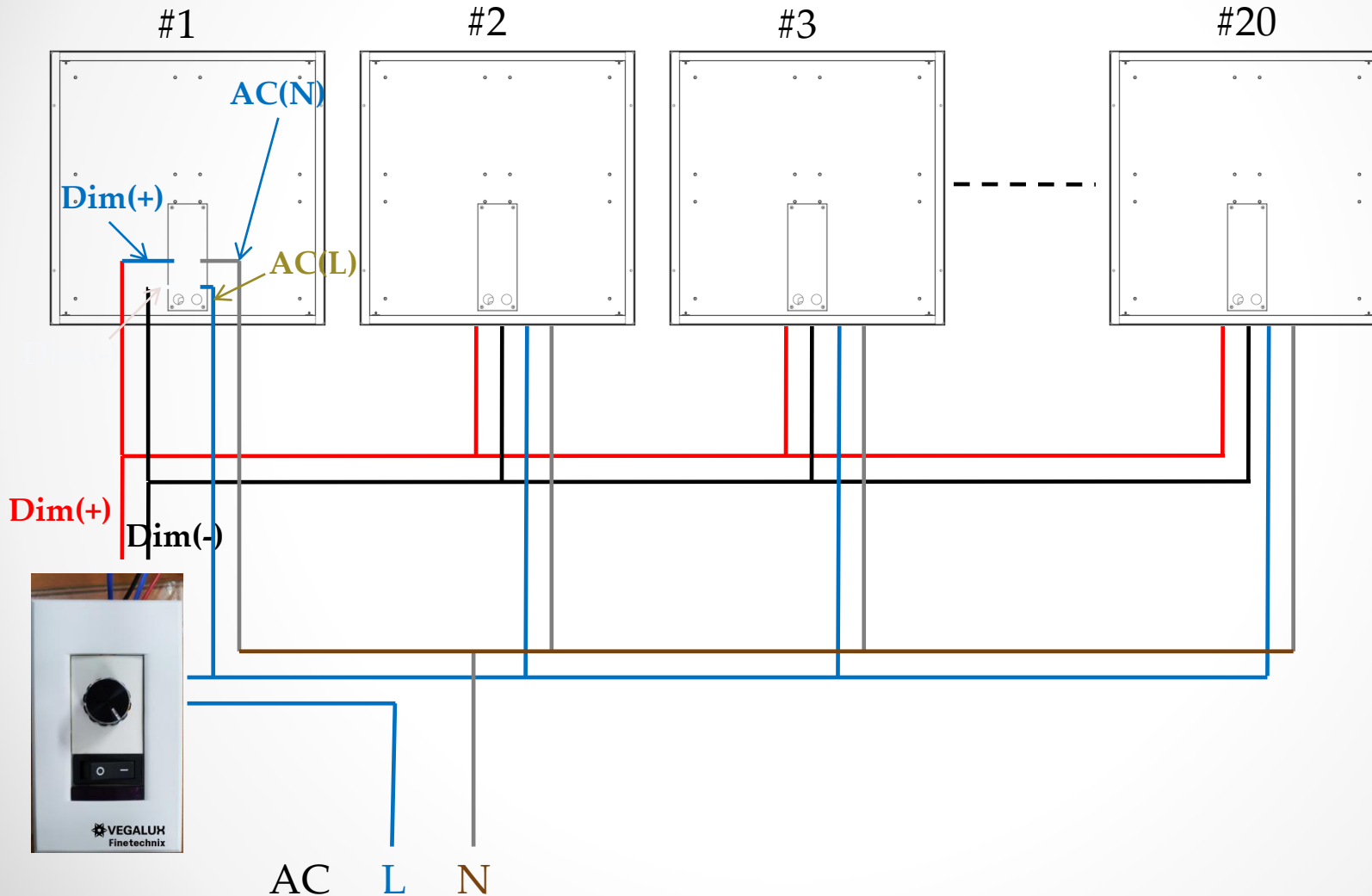


# Set Up for Linking Panels



Boston E Lab  
Energy Environment Essential

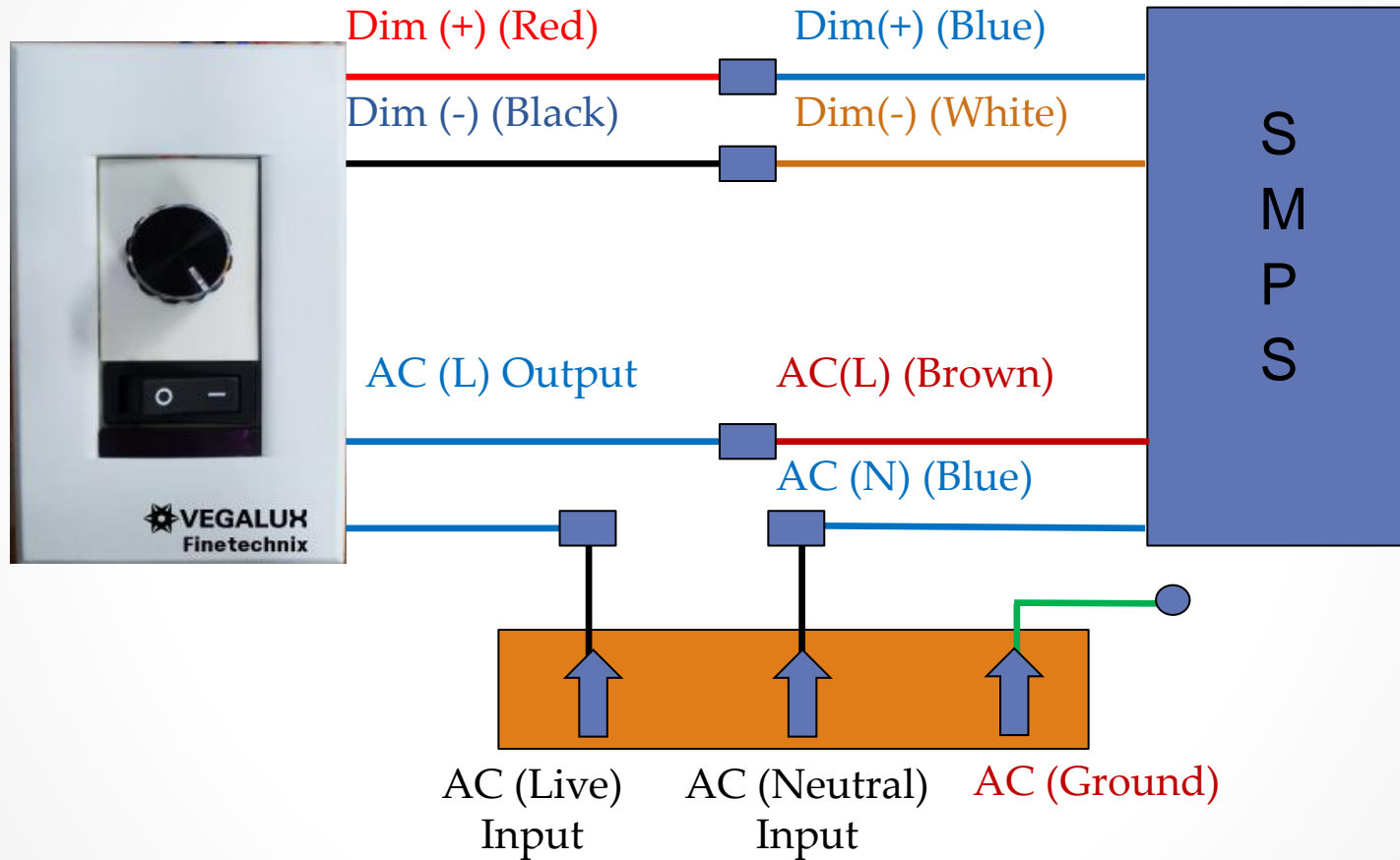
- Continue this for each additional panel up to 20pcs



# Set Up for Linking Panels



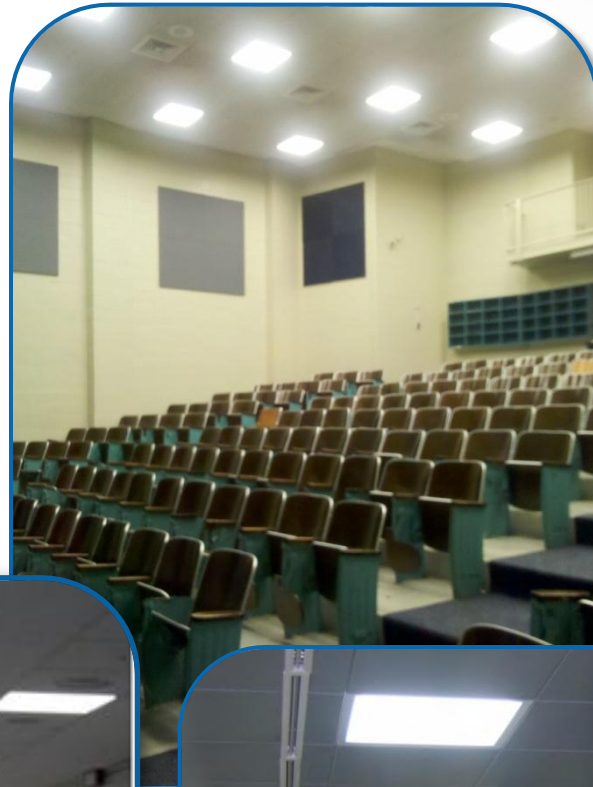
**Boston E Lab**  
Energy Environment Essencial



# Flat Panel Installations



**Boston E Lab**  
Energy Environment Essential





## 2x2 Flat Panel Lighting: FS50VT8 (Energy Savings only)

The calculation below does not include; utility rebate, maintenance cost saving, hazardous material disposal cost saving and may qualify your energy tax credit.



**Boston E Lab**  
Energy Environment Essencial

### Vs T8 3bulb 2x4

### Vs T12 4bulb 2x4

Description	Existing Lamp	BEL Lamp
Metal Halide(watt)	101	50
Total watt/lamp(watt)	101	50
Energy Saving%	50.50%	
Operating Hr/day	12	12
Days of use/week	5	5
Weeks of use/year	52	52
Total watt use/year	315120	156000
Total KW use/year	315.12	156
Cost/KW	\$0.15	\$0.15
Total cost/lamp/year	\$47.27	\$23.40
# of Lamp	100	100
Total Elec \$/year	\$4,726.80	\$2,340.00
Elec save \$/year		\$2,386.80
Life Time (hour)		50000
Expected life(years)		16.03
<b>Life Time Saving</b>		<b>\$38,250</b>

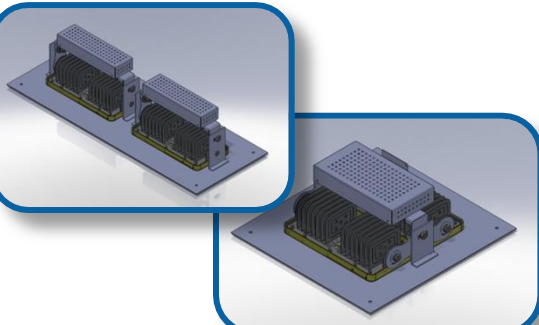
Description	Existing Lamp	BEL Lamp
Metal Halide(watt)	133	50
Total watt/lamp(watt)	133	50
Energy Saving%	62.41%	
Operating Hr/day	12	12
Days of use/week	5	5
Weeks of use/year	52	52
Total watt use/year	414960	156000
Total KW use/year	414.96	156
Cost/KW	\$0.15	\$0.15
Total cost/lamp/year	\$62.24	\$23.40
# of Lamp	100	100
Total Elec \$/year	\$6,224.40	\$2,340.00
Elec save \$/year		\$3,884.40
Life Time (hour)		50000
Expected life(years)		16.03
<b>Life Time Saving</b>		<b>\$62,250</b>

\*Note that these numbers only include savings for energy costs, excluding maintenance costs, replacement costs, rebate savings, etc.



# Gas Station Full Lighting Solution

- Canopy Lighting:  
XL060-S or XL060-D



- Indoors  
(replace existing 2'x4' CFL):  
2x2 Flat Panels



- Parking lot:  
XL060-D wall mount or shoebox



# Energy Efficiency & Performance and Safety Certifications



XL060UA, XL140UA, FS50VT8 DLC Certified and Listed



XL060UA, XL140UA ETL Listed



FS50VT8 UL Pending

**Thank you!**



•**Boston E Lab, Inc**

**17 Indian Woods Way, Canton, MA 02021**

**Showroom: 750 Main St, SE#1, Winchester, MA 01890**

**Tel: 781.369.1556**

**Cell: 781.775.0081**

**[info@bostonelabinc.com](mailto:info@bostonelabinc.com)**

**[www.bostonelab.com](http://www.bostonelab.com)**

**[www.bostonelabinc.com](http://www.bostonelabinc.com)**