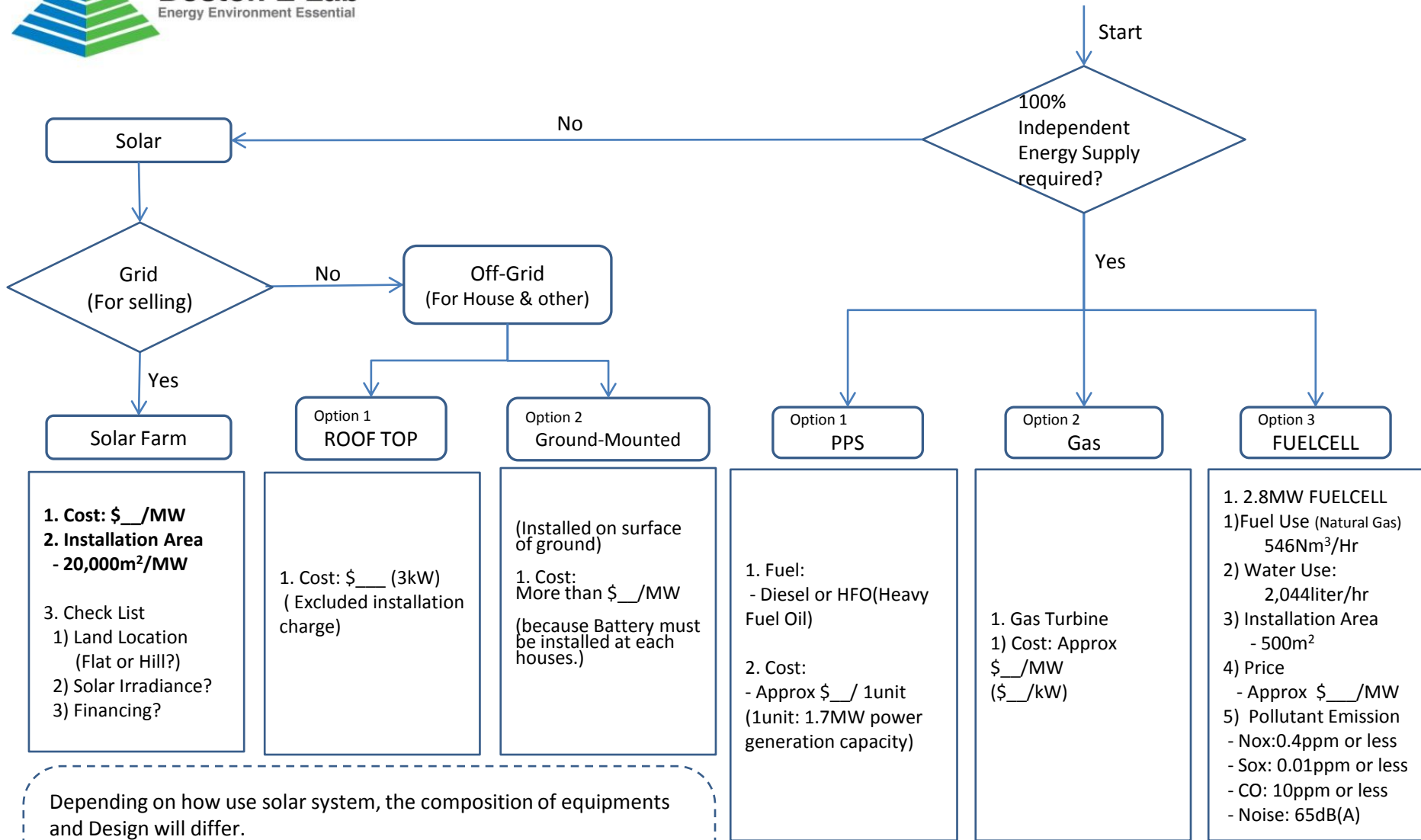




Alternative Energy Power Plant



1. Cost: \$__/MW
2. Installation Area - 20,000m²/MW
 3. Check List
 1) Land Location (Flat or Hill?)
 2) Solar Irradiance?
 3) Financing?

1. Cost: \$__ (3kW)
 (Excluded installation charge)

(Installed on surface of ground)
 1. Cost: More than \$__/MW
 (because Battery must be installed at each houses.)

1. Fuel:
 - Diesel or HFO(Heavy Fuel Oil)
 2. Cost:
 - Approx \$__/ 1unit (1unit: 1.7MW power generation capacity)

1. Gas Turbine
 1) Cost: Approx \$__/MW (\$__/kW)

1. 2.8MW FUELCELL
 1)Fuel Use (Natural Gas) 546Nm³/Hr
 2) Water Use: 2,044liter/hr
 3) Installation Area - 500m²
 4) Price - Approx \$__/MW
 5) Pollutant Emission
 - Nox:0.4ppm or less
 - Sox: 0.01ppm or less
 - CO: 10ppm or less
 - Noise: 65dB(A)

Depending on how use solar system, the composition of equipments and Design will differ.
 Normally,
 1) Grid Connected Solar system requires PV module, On-Grid Inverter and Junction Box
 2) Off-Grid System requires PV module, Off-grid Inverter, Charger, and Battery

* The price must be recalculated depending on PJT details.

Info@bostonelab.com
 Peter: 917.338.9626 peter@bostonelab.com
 Paul: 781.775.0081 paul@bostonelab.com