

SOLAR LIGHTING SYSTEM

MODEL #: SLS-24



SELF ENERGY GENERATION
ENVIRONMENT FRIENDLY
COMFORT & SAFETY AID
Village light solution

CARRIABLE AND TRANSPORTABLE, SELF INSTALLABLE PRODUCT!

[INTRODUCTION]

No public electric grid is necessary

Provide Stand Alone Lighting Solution **without significant grid build cost** (Save \$\$\$\$\$!)

Provide Comfort & Safety to residence where the location have **No Public Utility or black out situation.**

REDUCES FOREIGN OIL DEPENDENCY

Environmentally friendly product and Save Earth

[PRODUCT]



Solar Cable Length : 10m

Solar



SIZE: 200(W) x 150(D) x 130mm(H)

Battery



SIZE: 250(W) x 115(D) x 53mm(H)

3W LED Lamp



connection chain




< Left Side >
USB PORT
Cell Charging



< Right Side >
AC Adapter Charging

[SPECIFICATION]

Description	Size	Watt	Qty	Weight	Remarks
Solar Panel	424(W)x252(L)x17mm(D) 16.69(W)x9.92(L)x0.67in(D)	12	2	2.72kg / 6lbs	10m / 33 ft
Solar panel connecting port			1		
Connecting cable					
Battery (Control Box)	150(W)x200(L)x139mm(H) 5.91(W)x7.87(L)x6.47in(H)		1	4.54kg / 10lbs	600 Time
Battery/Control Box			1		
Solar panel connecting port			1		
LED lamp connecting port			2		
Connecting cable			1		5m / 16.5 ft
LED Lamp	115(W)x250(L)x53mm(H) 4.53(W)x9.84(L)x2.09in(H)	3	2	0.68kg/1.5lbs	each lamp size
3 Watt LED lamp			2		each lamp
Connecting cable			2		5m / 16.5 ft
Lamp hang in chain			2		304mm / 12in
Accessory					
AC Adaptor	Bellow DC 17V-3.0A	DC17V	1		Optional
USB Cable	Input : 12V, Output :5.0V		1		Optional

[SLS-24 USABLE WATT AND AC DEVICE USE]

Description	Hour	Charge (W)	Usable (w) -85%
Charge	1	14.81	12.59
Charge	2	29.62	25.18
Charge	3	44.43	37.77
Charge	4	59.25	50.36
Charge	5	74.06	62.95
Charge	6	88.87	75.54
Charge	7	103.68	88.13
Charge	8	118.49	100.72
Charge	9	133.30	113.31
Charge	9.7	144.00	122.7

Description	Qty	Hourly use(w)	Operation(h)
Led lamp	1	3	50
Led lamp	2	6	25
Cell phone	1	USB Charge -3.3W	36
Laptop 15in	1	Unusable	DC 12V ONLY

USE OF DAYS WITH FULL CHARGE: 2.5 DAYS / 10 HOUR PER DAY USE

DO NOT CONNECT AC DEVICE : CONNECT CELL PHONE OR MP3 THRU USB PORT

SOLAR LED LANTERN: SLS-20 USER GUIDE

[CHECK BATTERY CHARGE STATUS]

LED Indicator	Battery Charge Status	Remarks
Red indicator	Low battery	Please charge unit
Green indicator	Charged /Available LED Lamps	
Yellow indicator & Green indicator while recharging under Sunshine	Available LED Lamps	
Yellow indicator & Green indicator	Charging	

[CHARGE BATTERY. SOLAR PANEL: KEEP CLEAN CONDITION. DO NOT STRUCK OR HIT UNIT]



[CAUTION]

OPEN FROM PACKAGE :GIVE A FULL INITIAL CHARGE UNIT PRIOR TO USE (RECOMMEND 6~10 HOUR)

Do not touched the inflammability substance to control box.

Do not touch the metal on the SOCKET, POWER ON status. Cause of the Shot.

DO NOT KEEP PRODUCT **INSIDE OF VEHICLE LONG TIME.**

POWER ON/OFF SWITCH **MUST BE OFF POST AC DEVICE CHARGE** FOR PREVENT BATTERY DRAIN

This device uses exclusive LED LAMP(3W). Solar charge is possible without power switch On/Off.

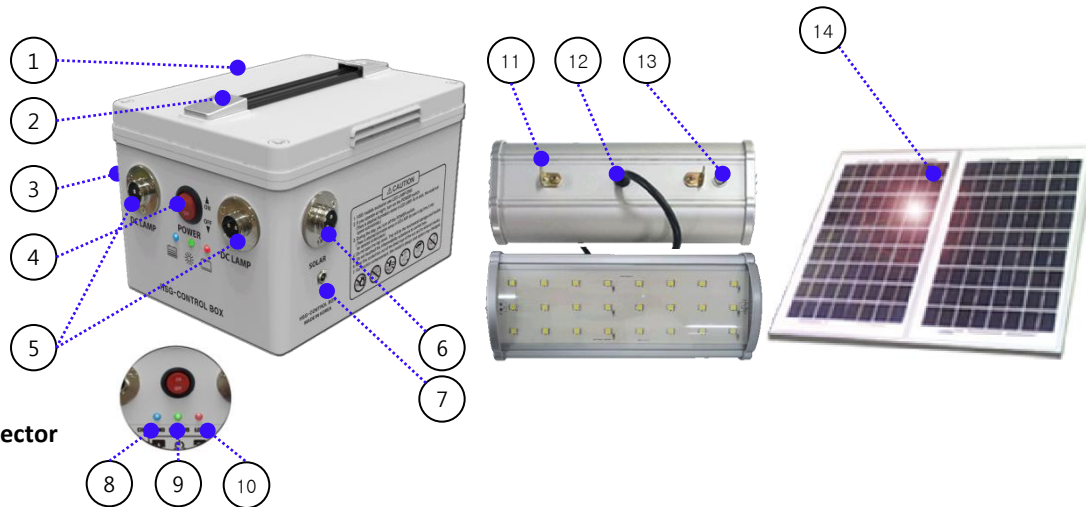
At night, Turn on the POWER switch. Then, This device acts automatically by sensor.

A daytime, Turn off the POWER switch. If not, This device can be acted at dark place by sensor.

Sensor has attached to lamp and lamp acts automatically(about bellow 15Lux)

[PART NAME]

- Battery (Control Box)
- Carrying Handle
- USB Port
- Power Switch
- DC Socket (2EA)
- Solar Socket
- External AC Adapter Port (DC 17V-3.0A)
- Yellow Indicator
- Green Indicator
- Red Indicator
- LED Lamp -3W
- Connecting Cable & Connector
- Illuminance Sensor
- Solar Panel



[INFORMATION]

USE 11~13 Hour post full-charging. Charge thru Solar Panel Face Sunlight **Best Charging Time: Sunrise to 3PM**

Product have a built in over-charge and over-discharge resistant leads for safety

Recommend Battery Temperature: -10°C~+45°Celsius 14°F~+113°Fahrenheit 263.15K~318.15Kelvin

Led Lamp will auto stop running when voltage drop ~11.0V for prevent battery damage (**Red indicator on**)

Able to recharge battery with DC 17V jack on to external jack port (7)